



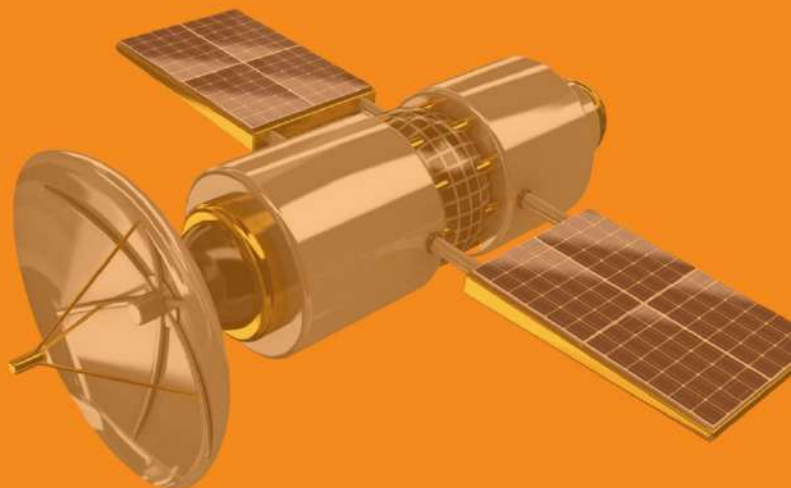
TURBO INDIA

INTERCONNECT SOLUTIONS LLP

**QUALITY
YOU CAN
TRUST**



RECTANGULAR BACKSHELLS



www.turboindia.co.in

CONTENTS

1.	ABOUT TURBO INDIA INTERCONNECT SOLUTIONS.....	2
2.	CAPABILITIES & SERVING AREAS.....	3
3.	BACKSHELL DESIGN.....	4
4.	RECTANGULAR BACKSHELL SELECTION PROCEDURE.....	5
5.	PART NUMBERING PATTERN RECTANGULAR BACKSHELL..	6
6.	PRODUCT FINDER RECTANGULAR BACKSHELLS.....	9
7.	MATERIAL & FINISH CODE.....	10
8.	HARDWARE OPTIONS.....	11
9.	POPULAR CROSS REFERENCE WITH TURBO.....	14

RECTANGULAR BACKSHELLS

10.	SERIES DSB01.....	16
11.	SERIES DSB11.....	18
12.	SERIES MDB01.....	20
13.	SERIES MDB02.....	22
14.	SERIES MDB11.....	24
15.	SERIES MDB12.....	26
16.	SERIES MDB21.....	28
17.	SERIES ARC-P-X.....	30
18.	SERIES ARCS-P.....	32
19.	TERMINATION BAND.....	35
20.	FACILITIES.....	37
21.	SUMMARY.....	38



WHO WE ARE

Turbo India Interconnect Solutions (TICS) – subsidiary of Turbo India, is an AS9100 certified company, specialized in manufacture and supply of Connectors, Backshells, Protective Covers, Electrical Contacts and Components for Military, Aerospace and Industrial applications, against standard and custom requirements.

Headquartered in Bangalore, India, the 4000sq.m. facility is equipped with adequate infrastructure for the design, manufacture, assembly, testing and inspection of interconnect products.

The long-standing manufacturing expertise of the Turbo group, spanning over two decades since 1996, supporting the Military and Aerospace industry, equips TICS to work in collaboration with its customers to offer a complete solution.



VISION

To be a trusted and reliable hub for on-time, best in-class quality solutions for the interconnect requirements of Military, Aerospace, Industrial, Railways, Marine, Oil & Gas, and Medical sectors.



MISSION

The TICS family will continuously strive towards delighting the customers with on-time quality solutions, by utilizing world class facilities, following industry best practices, adopting a never-ending exercise of continuous improvement and employee engagement.



CAPABILITIES



SALES – With sales and distribution networks in India, Europe & the USA, we are ever closer to our customers. Our sales team is capable of understanding your needs and expectations and is focused in delivering the right solution and the best customer experience.

ENGINEERING – Our dedicated engineering team, equipped and aided with adequate product knowledge and software technologies are capable of providing standard or bespoke interconnect solutions, by working in partnership with you for specific designs to best suit your needs.

PRODUCTION – Our fleet of high-end CNC machines, aided by decades of experience are capable of manufacturing complex geometries. With machining, surface plating and assembly facilities under one roof, we assuring highest quality in quick turn-around time.

COST AND LEAD TIME – Through constantly reviewing our manufacturing process and implementing continual improvement practices, we always aim to pass on the benefits of cost and lead time to our customers.

SERVING AREAS

AEROSPACE



LAND SYSTEM



SPACE



MARINE

MILITARY

COMMERCIAL

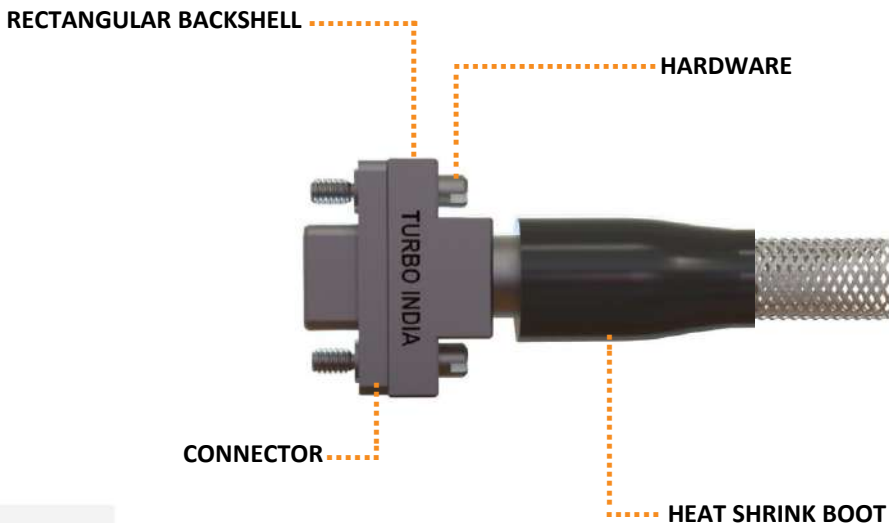


RECTANGULAR BACKSHELL DESIGN

Connector backshells are need based accessories attached to the rear side of connector. Apart from the primary function of protecting the cable-contact interface from external interferences, backshells may also be designed to serve additional requirements like strain relief, environmental sealing and EMI/RFI shielding between the connected cable and the connector.

Connector backshells come in various shapes and sizes – the front end essentially designed to suite and attach to the rear side of the particular connector they are intended to serve, and the rear end designed to serve the intended backshell function. The attaching mechanism on the connector end for rectangular backshells will be by means of screwed accessories.

Depending on the intended function, the backshells for a particular connector vary with respect to their configuration like, holding area for securing cable/ external braid for EMI/RFI shielding, provision for accommodating a heat shrink boot etc.



SELECTION PROCEDURE

The rectangular backshells on offer from Turbo India Interconnect Solutions (TI) are identified by specific characters in its ordering part number to suite multiple requirements for the customer in terms of Fit, Form & Function. A general selection procedure given below may be used as a reference to identify your ordering part number on your own, even when our team is always available to handle this activity for you.

1. IDENTIFY THE PRODUCT SERIES

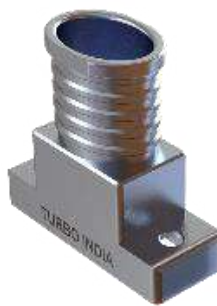
The rectangular backshells offered by TI, are identified by the connector interfaces either **MIL-DTL-24308** (D-Sub) or **MIL-DTL-83513** (Micro-D). Rectangular backshells are also offered for the **ARINC** series of connectors as well.

The TI product series for the backshell can be identified by the **DSB** (D-Sub backshell) and **MDB** (Micro-D backshell) coding, following the Brand name, in its ordering information. The numbers following the coding defines the type of cable entry – circular/ elliptical.

2. SELECT A SUITABLE BACKSHELL ANGLE

TI offers selection of straight as well as 90° angled profiles in its rectangular backshells, for effective cable management. The selection of backshell angle should be based on the available room for cable routing, accessibility for repair or rework, and to avoid over-straining due to acute angles.

Straight or **90° angled** profile selection and inclusion in backshell part number is defined by “**ENTRY OPTION**” in the ordering information matrix.



STRAIGHT



90° ANGLED

3. SELECT SHELL SIZE & CABLE ENTRY

TI rectangular backshell shell sizes are defined by “**SHELL SIZE**” in the ordering information, corresponding to the connector shell size. The design and construction of standard offerings are made based on applicable connector standard interface dimensions.

Multiple options with regard to cable entry defined by “**ENTRY SIZE**” in the ordering information, are offered to suite different cable sizes, and the available options are defined specific to the backshell series and identified in the backshell part number.

Cable entry defines the size of the jacketed cable or the cable bundle that may be routed through the backshell, to be terminated to the connector. Selection should be in such a way that the cable / cable bundle diameters are taken in smoothly without tightening on the cable, while avoiding a clearance slack of more than 1mm radially. In addition to standard dimensions offered for the cable entry, TI is open to include customized sizes as well, based on customer requirements, with a different and specific part number, than that available in the ordering information.

Standard TI rectangular backshell are offered satisfying the length requirements as defined in the ordering information matrix. However, TI is open to customizations, and the extend of availability for increments in length may be confirmed by the User, with TI sales, during enquiry/ before placing orders.

4. SPECIFY BASE MATERIAL AND FINISH

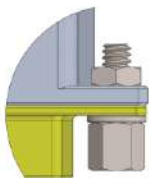
The material and finish selection of a backshell should be same as the connector material and finish. This ensures satisfying conductivity requirements on a grounding backshells apart from avoiding galvanic corrosion due to dissimilar metal contact.

TI offers its backshells in aluminium alloy, with a surface plating option of cadmium, electroless nickel, zinc nickel and zinc cobalt. Options to select the desired material and finish for TI backshells are specified by “**MATERIAL & FINISH**”, in the ordering information matrix, specific to different backshell series.

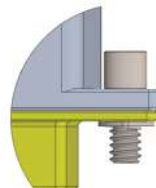
In addition, backshells can also be offered in passivated stainless steel; the P/N may be confirmed by the User, with TI sales, during enquiry/ before placing orders.

5. SELECT A SUITABLE ATTACHING HARDWARE OPTION

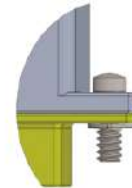
TI offers **jackpost** and **jackscREW** options, in the hardwares for attaching the backshell on to the connector/ connector panel. Custom hardware options may also be offered, for which User may confirm the part number with TI sales, during enquiry/ before placing orders. The interface dimensions of the hardwares are based on the mounting dimensions available on the attaching connectors.



JACKPOST



**HEXAGONAL
SOCKET HEADED**



JACKSCREW

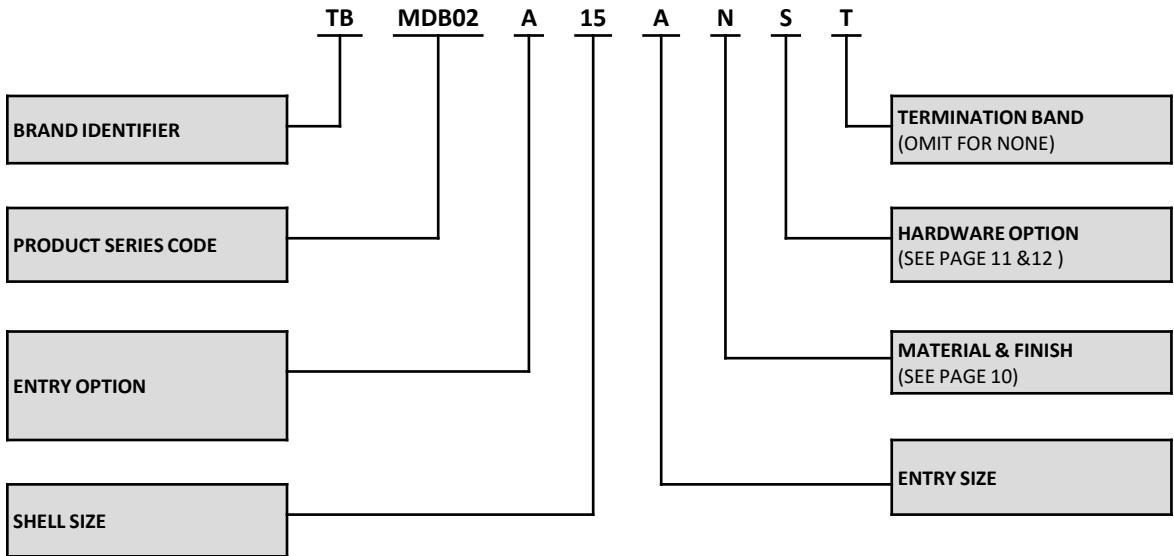
The option to select different hardware available at TI, is provided in the specific ordering information matrix defined by “**HARDWARE OPTION**”, for different backshell series.

6. SELECT WITH/ WITHOUT TERMINATION BAND

TI offers its rectangular backshells with or without provision for attaching EMI/ RFI shielding braids either integrated on the connecting cable or independent, with a termination band. The backshells with EMI/ RFI compatibility identified by letter “T” in the “TERMINATION BAND” option in the ordering information, are intended and designed to effectively extend the protection over the signal transfer interface of the connector, against external signal interferences, offered by the attaching braided cable or provide for the same by attachment of an external braid. Provision in certain cases is available for attaching a shrink boot as well to protect the braid - backshell connection against ingress.

The backshell selection steps listed above in most cases, will help customers in choosing a TI part number satisfying the User requirements, from the standard offerings. Alternatively, the requirements may be floated or standard / competitor part number shared, to the TI team who may suggest a suitable backshell part number for quote/ procurement.

PART NUMBER BREAKDOWN RECTANGULAR BACKSHELLS



PRODUCT FINDER

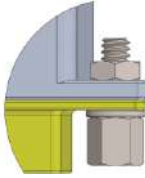

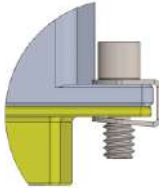

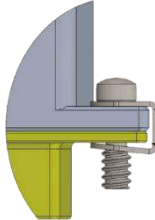





SERIES CODE	MODEL	DESCRIPTION	PAGE NO
SERIES DSB01		D SUB EMI BACKSHELLS CIRCULAR ENTRY	16
SERIES DSB11		D SUB EMI BACKSHELLS ELLIPTICAL ENTRY	18
SERIES MDB01		MICRO-D EMI BACKSHELLS CIRCULAR ENTRY	20
SERIES MDB02		MICRO-D EMI BANDING BACKSHELL WITH CIRCULAR ENTRY	22
SERIES MDB011		MICRO-D EMI BACKSHELLS ELLIPTICAL ENTRY	24
SERIES MDB012		MICRO-D EMI BANDING BACKSHELL WITH ELLIPTICAL ENTRY	26
SERIES MDB021		MICRO-D EMI BACKSHELLS OVAL ENTRY	28
SERIES ARC-P-X		ARINC 600 - BANDING BACKSHELL - SIZE 3 PLUG	30
SERIES ARCS-P		ARINC 600 - STRAIN RELIEF BACKSHELL - SIZE 1	30



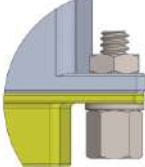

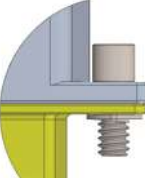

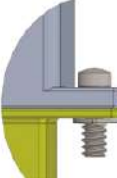





MATERIAL & FINISH CODE

TURBO CODE	MILITARY CODE	MATERIAL	FINISH	APPEARANCE	PROCESS	ROHS COMPLIANT	SALT SPRAY HOURS
A	A	ALUMINIUM ALLOY	BLACK ANODIZED	GREY / BLACK	AMS-A-8625 Type II Class 2, Non-Conductive -65 to +175°C	YES	336
AH	-	ALUMINIUM ALLOY	HARD ANODIZED	BLACK	AMS-A-8625 Type III, Class 2, .001" thick, Non-Conductive -65 to +200°C	YES	336
N	N	ALUMINIUM ALLOY	ELECTROLESS NICKEL	BRIGHT METAL	AMS-C-26074 Class 4 Grade A ; ASTM-B-733, SC 2, Type IV, Conductive -65 to +200°C	YES	96
W	W	ALUMINIUM ALLOY	CADMIUM	OLIVE DRAB GREEN	AMS-QQ-P-416 Type II Class 2 over electroless nickel, Conductive -65 to +175°C	NO	500
WS	W	ALUMINIUM ALLOY	CADMIUM	OLIVE DRAB GREEN	AMS-QQ-P-416 Type II Class 2 over electroless nickel, Conductive -65 to +175°C	NO	1000
Z	Z	ALUMINIUM ALLOY	ZINC NICKEL	BLACK	ASTM B841 Grade 5 over electroless nickel, Conductive -65 to +175°C	NO	500
VB	-	ALUMINIUM ALLOY	ZINC COBALT	BLACK	ASTM B 840 Grade 6 Type D over electroless nickel, Conductive -65 to +175°C	YES	350
VO	-	ALUMINIUM ALLOY	ZINC COBALT	OLIVE DRAB GREEN	ASTM B 840 Grade 6 Type D over electroless nickel, Conductive -65 to +175°C	YES	350
NU	-	NICKEL ALUMINIUM BRONZE	UNPLATED	BRIGHT METAL	Conductive -65 to +200°C	YES	1000
NS	-	NICKEL ALUMINIUM BRONZE	SHOT BLASTED	MATTE METAL	Conductive -65 to +200°C	YES	1000
S	S	STAINLESS STEEL	PASSIVATION	BRIGHT METAL	AMS-QQ-P-35 Type VI, Conductive -65 to +200°C	YES	1000
Y	F	ALUMINIUM ALLOY	CADMIUM	GOLD - YELLOW	AMS-QQ-P-416, Type II, Class 2, over electroless Nickel, Conductive -65 to +175°C	NO	1000
WC	-	ALUMINIUM ALLOY	CADMIUM	CLEAR - BRIGHT METAL	AMS-QQ-P-416, Type II, Class 2, over electroless Nickel, Conductive -65 to +175°C	NO	1000
L	-	STAINLESS STEEL	ELECTROLESS NICKEL	BRIGHT METAL	AMS-C-26074, Grade B, Conductive -65 to +200°C	YES	500

HARDWARE OPTION

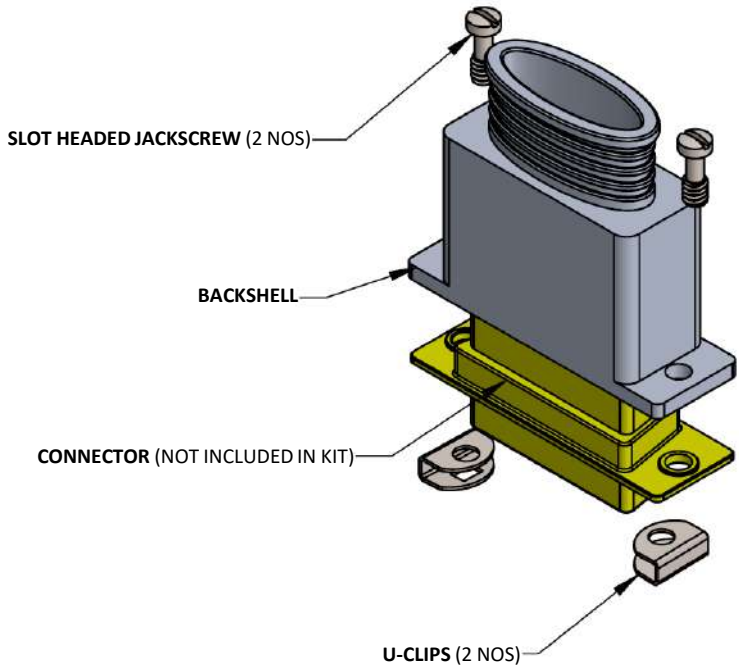
HARDWARE OPTIONS FOR D SUB BACKSHELLS			
CODE	DESCRIPTION	ASSEMBLED VIEW	KIT ELEMENTS
J	JACKPOST		JACK POST - 2NOS. WASHERS - 2NOS. 4-40 UNC NUT - 2NOS. 
H	HEXAGONAL SOCKET HEADED - LOW PROFILE		SCREWS - 2NOS. U CLIPS - 2NOS. 
S	SLOT HEADED JACKSCREW - LOW PROFILE		SCREWS - 2NOS. U CLIPS - 2NOS. 
EX	HEXAGONAL SOCKET HEADED - EXTENDED		SCREWS - 2NOS. U CLIPS - 2NOS. 
E	SLOT HEADED JACKSCREW - EXTENDED		SCREWS - 2NOS. U CLIPS - 2NOS. 

HARDWARE OPTION

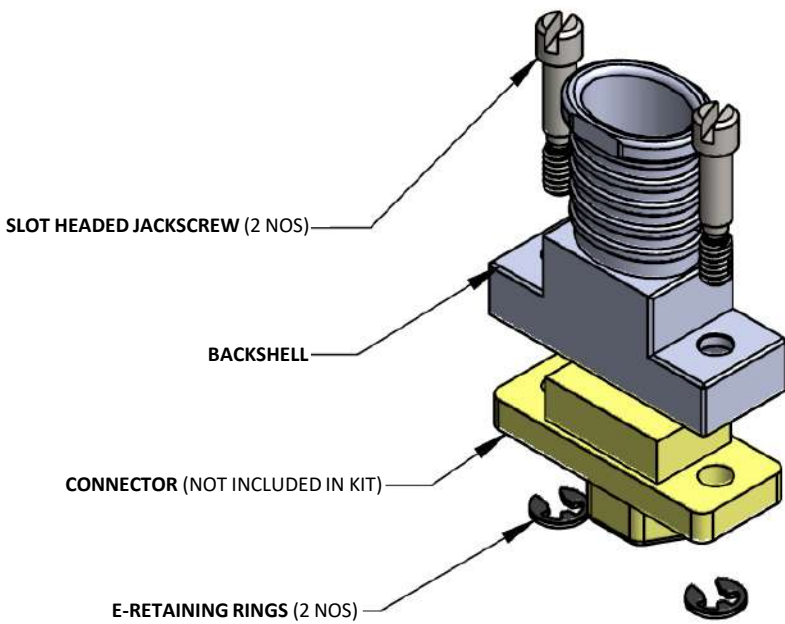
HARDWARE OPTIONS FOR MICRO D SUB BACKSHELLS			
CODE	DESCRIPTION	ASSEMBLED VIEW	KIT ELEMENTS
J	JACKPOST		JACK POST - 2NOS. WASHERS - 2NOS. 4-40 UNC NUT - 2NOS 
H	HEXAGONAL SOCKET HEADED - LOW PROFILE		SCREWS - 2NOS. E-RETAINING RINGS - 2NOS. 
S	SLOT HEADED JACKSCREW - LOW PROFILE		SCREWS - 2NOS. E-RETAINING RINGS - 2NOS. 
EX	HEXAGONAL SOCKET HEADED - EXTENDED		SCREWS - 2NOS. E-RETAINING RINGS - 2NOS. 
E	SLOT HEADED JACKSCREW - EXTENDED		SCREWS - 2NOS. E-RETAINING RINGS - 2NOS. 

HARDWARE OPTION

**HARDWARE OPTION FOR D SUB BACKSHELL
(FOR REFERENCE ONLY)**



**HARDWARE OPTION FOR MICRO D BACKSHELL
(FOR REFERENCE ONLY)**



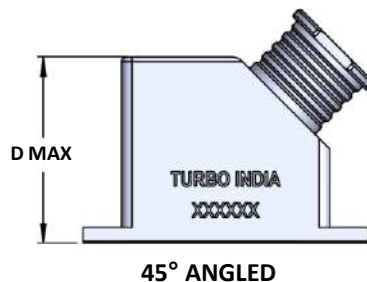
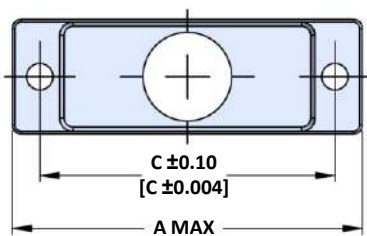
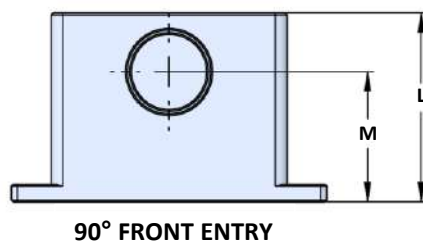
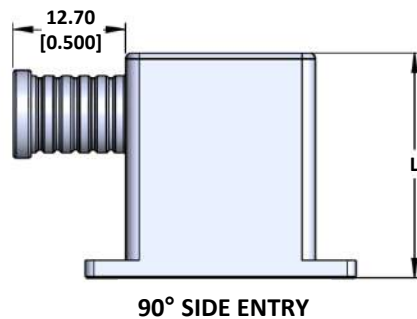
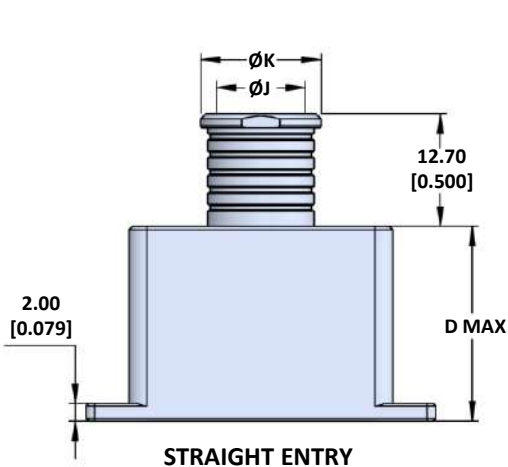
POPULAR CROSS REFERENCE WITH TURBO PRODUCT SERIES

PROTECTIVE COVERS		
TURBO SERIES CODE	GLENAIR	TE / POLAMCO
SERIES DSB01	557T246	D25-1-BT
SERIES DSB11	---	D25-1-BT
SERIES MDB01	500-010	RBTMM
SERIES MDB02	500-011	---
SERIES MDB011	507-047	---
SERIES MDB012	----	BTMMTB
SERIES MDB021	----	----
SERIES ARC-P-X	527-108	ARC600-3
SERIES ARCS-P	527-056	---

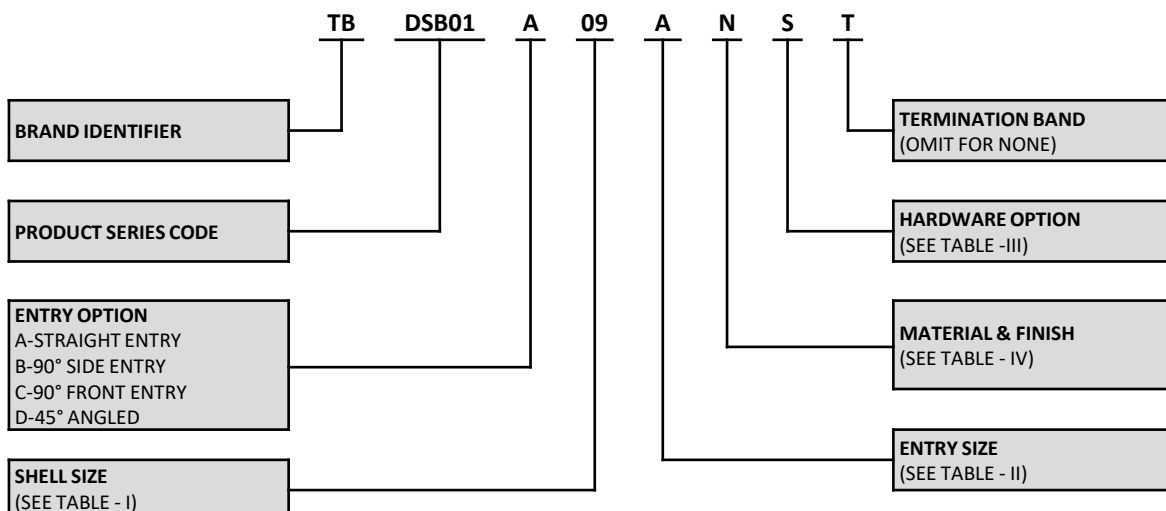
RECTANGULAR BACKSHELLS

Our Rectangular Backshell portfolio includes Backshells for D-Sub (MIL-DTL-24308), Micro D-Sub (MIL-DTL-83513) and ARINC 600 connectors. These are available in both circular and elliptical cable entry styles with straight, 45° and 90° cable routing options. These backshells offer protection from EMI/RFI interference and can be supplied with a wide array of hardware retention options for mounting on to the connectors.

SERIES DSB01



ORDERING INFORMATION



SERIES DSB01

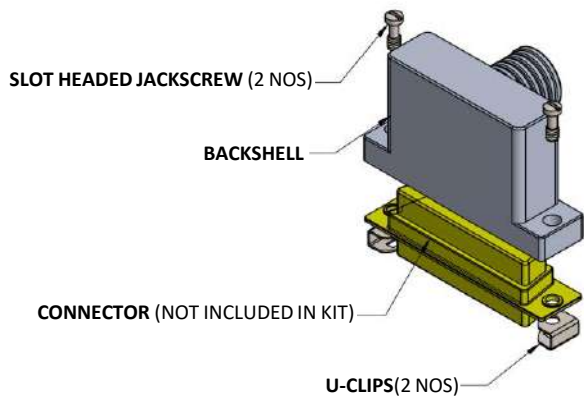
SHELL SIZE (TABLE - I)						
SHELL SIZE	A MAX	B MAX	C ± 0.10 (± 004)	D MAX	L	M
9	31.20 (1.228)	13.30 (0.509)	25.00 (0.984)	38.10 (1.500)	42.70 (1.680)	31.80 (1.250)
15	39.50 (1.732)	13.30 (0.509)	33.30 (1.312)	38.10 (1.500)	42.70 (1.680)	31.80 (1.250)
25	53.45 (2.104)	13.30 (0.509)	47.00 (1.852)	38.10 (1.500)	42.70 (1.680)	31.80 (1.250)
37	69.80 (2.748)	13.30 (0.509)	63.50 (2.500)	38.10 (1.500)	42.70 (1.680)	31.80 (1.250)
50	67.30 (2.649)	16.80 (0.660)	61.12 (2.406)	38.10 (1.500)	42.70 (1.680)	35.10 (1.380)
104	69.70 (2.744)	18.50 (0.730)	63.50 (2.500)	38.10 (1.500)	42.70 (1.680)	37.30 (1.470)

ENTRY SIZE (TABLE - II)		
ENTRY SIZE	ØJ	ØK
A	3.18 (0.125)	5.20 (0.205)
B	4.74 (0.187)	6.78 (0.267)
C	6.85 (0.270)	8.89 (0.350)
D	7.36 (0.290)	9.39 (0.370)
E	7.92 (0.312)	9.95 (0.392)
F	10.00 (0.395)	12.06 (0.475)
G	10.66 (0.420)	12.70 (0.500)
H	12.70 (0.500)	14.73 (0.580)
J	13.43 (0.529)	15.46 (0.609)

HARDWARE OPTION (TABLE - III)		
CODE	DESCRIPTION	ITEMS IN KIT
J	JACKPOST	JACKPOST - 2 NOS LOCK NUT - 2 NOS TEETH WASHER - 2 NOS
H	HEXAGONAL SOCKET HEADED - LOW PROFILE	HEX HEADED JACKSCREW - 2 NOS U CLIPS - 2 NOS
S	SLOT HEADED JACKSCREW - LOW PROFILE	SLOT HEADED JACKSCREW - 2 NOS U CLIPS - 2 NOS
EX	HEXAGONAL SOCKET HEADED - EXTENDED	HEXAGONAL SOCKET HEADED JACKSCREW - 2 NOS U CLIPS - 2 NOS
E	SLOT HEADED JACKSCREW - EXTENDED	SLOT HEADED JACK SCREW - 2 NOS U CLIPS - 2 NOS

MATERIAL AND FINISH (TABLE IV)		
CODE	MATERIAL	FINISH
W	ALUMINIUM ALLOY	CADMIUM OLIVE DRAB
N		ELECTROLESS NICKEL
Z		ZINC NICKEL BLACK
A		ANODIZE BLACK
SEE PAGE NO 10 FOR FULL RANGE OF FINISH OPTIONS		

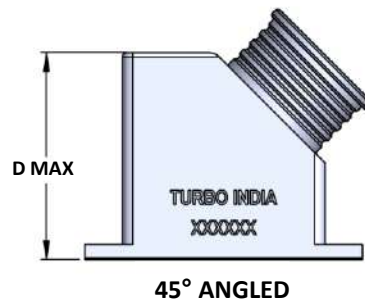
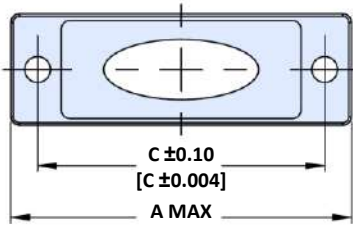
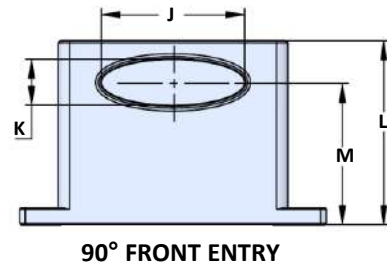
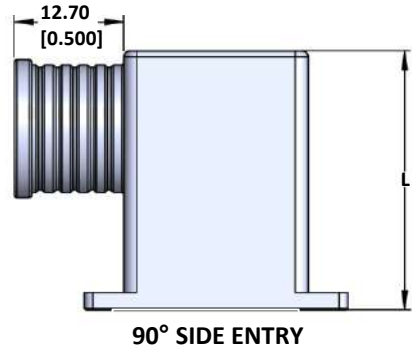
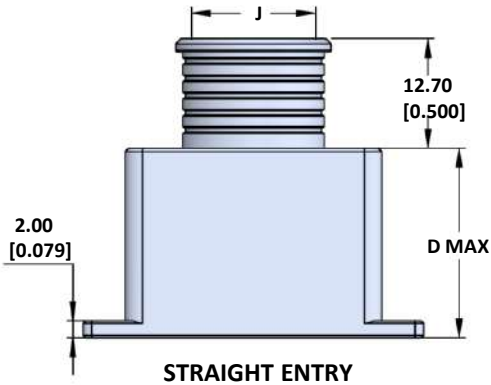
HARDWARE OPTION- S
(FOR REFERENCE ONLY)



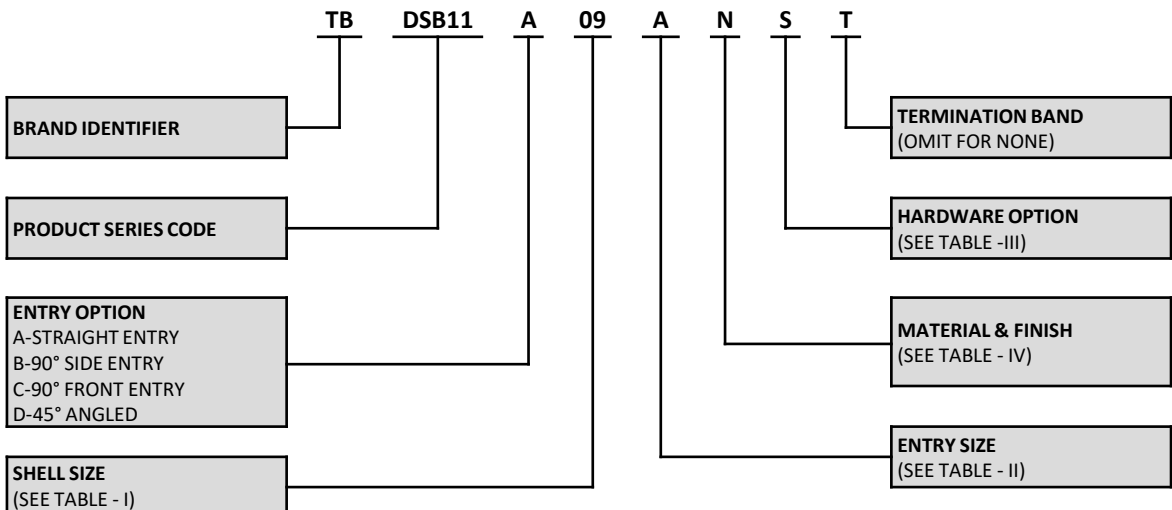
- Dimensions in parenthesis are in inches.
- Custom Hardware options can be provided on request. For customization mail to us on sales@turboindia.co.in



SERIES DSB11



ORDERING INFORMATION



SERIES DSB11

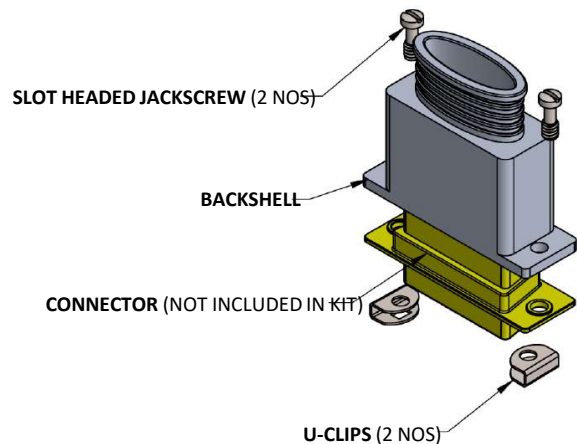
SHELL SIZE (TABLE - I)						
SHELL SIZE	A MAX	B MAX	C ± 0.10 (± 004)	D MAX	L	M
9	31.20 (1.228)	13.30 (0.509)	25.00 (0.984)	38.10 (1.500)	42.70 (1.680)	31.80 (1.250)
15	39.50 (1.732)	13.30 (0.509)	33.30 (1.312)	38.10 (1.500)	42.70 (1.680)	31.80 (1.250)
25	53.45 (2.104)	13.30 (0.509)	47.00 (1.852)	38.10 (1.500)	42.70 (1.680)	31.80 (1.250)
37	69.80 (2.748)	13.30 (0.509)	63.50 (2.500)	38.10 (1.500)	42.70 (1.680)	31.80 (1.250)
50	67.30 (2.649)	16.80 (0.660)	61.12 (2.406)	38.10 (1.500)	42.70 (1.680)	35.10 (1.380)
104	69.70 (2.744)	18.50 (0.730)	63.50 (2.500)	38.10 (1.500)	42.70 (1.680)	37.30 (1.470)

ENTRY SIZE (TABLE - II)		
ENTRY SIZE	J	K
A	13.00 (0.512)	9.50 (0.374)
B	16.50 (0.650)	9.50 (0.374)
C	20.50 (0.807)	9.50 (0.374)
D	24.70 (0.972)	9.50 (0.374)
E	29.40 (1.157)	9.50 (0.374)
F	34.60 (1.362)	9.50 (0.374)
G	40.20 (1.583)	9.50 (0.374)
H	46.20 (1.819)	9.50 (0.374)
J	52.70 (2.075)	9.50 (0.374)
K	50.00 (1.969)	12.00 (0.472)
L	49.20 (1.937)	13.90 (0.547)
M	54.90 (2.161)	13.90 (0.547)

HARDWARE OPTION (TABLE - III)		
CODE	DESCRIPTION	ITEMS IN KIT
J	JACKPOST	JACKPOST - 2 NOS LOCK NUT - 2 NOS TEETH WASHER - 2 NOS
H	HEXAGONAL SOCKET HEADED - LOW PROFILE	HEX HEADED JACKSCREW - 2 NOS U CLIPS - 2 NOS
S	SLOT HEADED JACKSCREW - LOW PROFILE	SLOT HEADED JACKSCREW - 2 NOS U CLIPS - 2 NOS
EX	HEXAGONAL SOCKET HEADED - EXTENDED	HEXAGONAL SOCKET HEADED JACKSCREW - 2 NOS U CLIPS - 2 NOS
E	SLOT HEADED JACKSCREW - EXTENDED	SLOT HEADED JACK SCREW - 2 NOS U CLIPS - 2 NOS

MATERIAL AND FINISH (TABLE IV)		
CODE	MATERIAL	FINISH
W	ALUMINIUM ALLOY	CADMIUM OLIVE DRAB
N		ELECTROLESS NICKEL
Z		ZINC NICKEL BLACK
A		ANODIZE BLACK
SEE PAGE NO 10 FOR FULL RANGE OF FINISH OPTIONS		

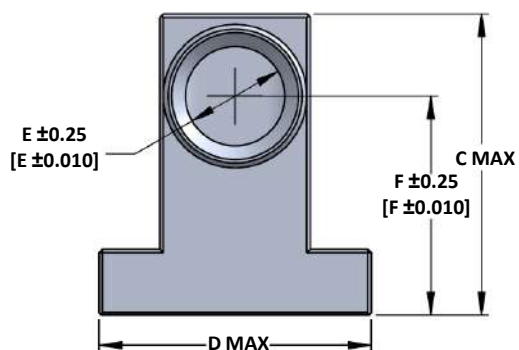
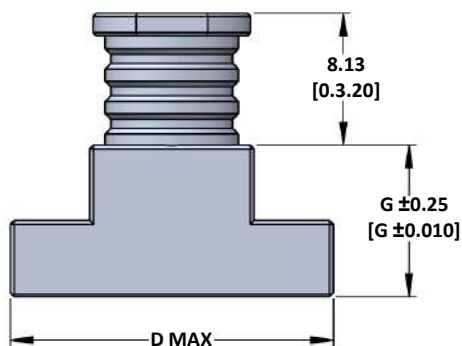
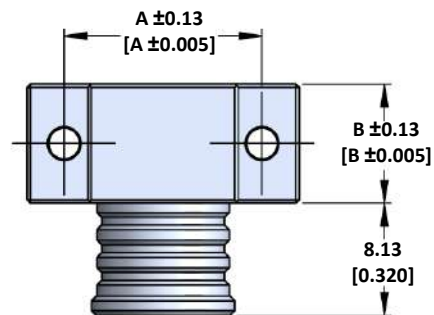
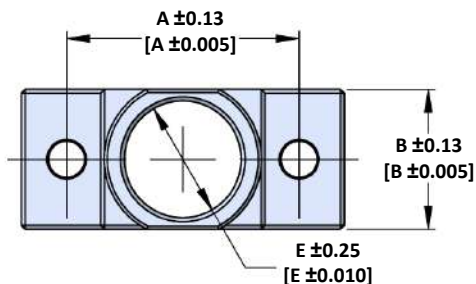
HARDWARE OPTION-S
(FOR REFERENCE ONLY)



- > Dimensions in parenthesis are in inches.
- > Custom Hardware options can be provided on request. For customization mail to us on sales@turboindia.co.in



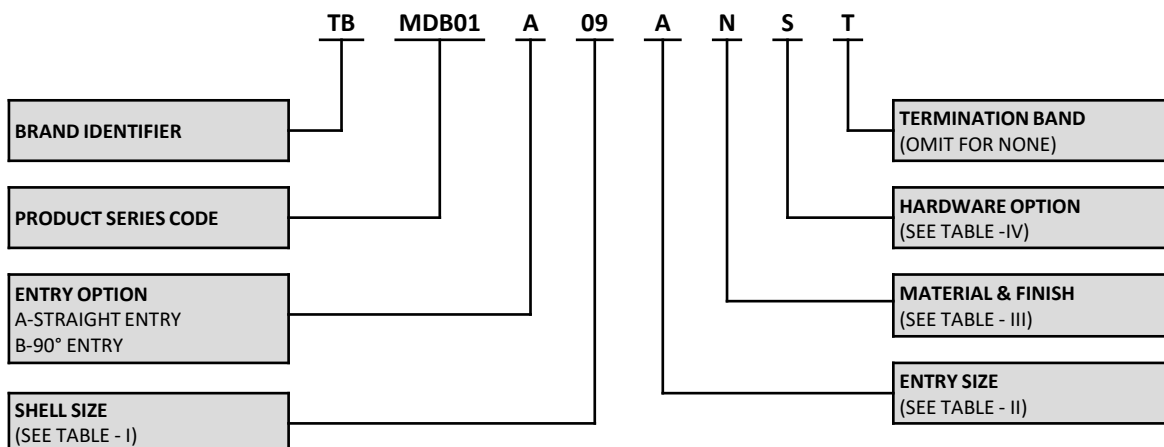
SERIES MDB01



STRAIGHT ENTRY

90° ENTRY

ORDERING INFORMATION



SERIES MDB01

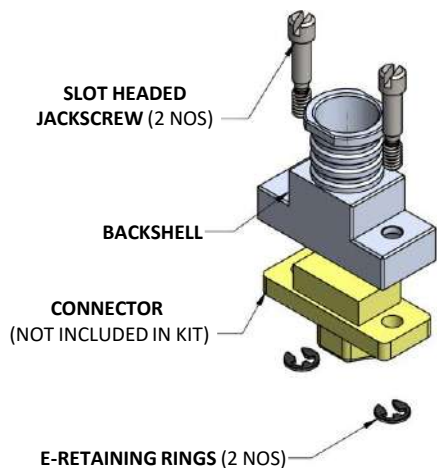
SHELL SIZE (TABLE - I)						
SHELL SIZE	A ± 0.13 (± 0.005)	B ± 0.13 (± 0.005)	C MAX	D MAX	F ± 0.25 (± 0.010)	G ± 0.25 (± 0.010)
9	14.35 (0.565)	8.64 (0.340)	21.97 (0.865)	19.94 (0.785)	15.88 (0.625)	11.04 (0.434)
15	18.16 (0.715)	8.64 (0.340)	21.97 (0.865)	23.75 (0.935)	15.88 (0.625)	12.49 (0.491)
21	21.97 (0.865)	8.64 (0.340)	21.97 (0.865)	27.56 (1.085)	15.88 (0.625)	13.76 (0.541)
25	24.51 (0.965)	8.64 (0.340)	21.97 (0.865)	30.10 (1.185)	15.88 (0.625)	15.03 (0.591)
31	28.32 (1.115)	8.64 (0.340)	21.97 (0.865)	33.91 (1.335)	15.88 (0.625)	16.05 (0.631)
37	32.13 (1.265)	8.64 (0.340)	21.97 (0.865)	37.72 (1.485)	15.88 (0.625)	17.07 (0.672)
51	30.86 (1.215)	10.16 (0.400)	21.97 (0.865)	36.45 (1.435)	15.88 (0.625)	19.19 (0.755)
69	34.48 (1.515)	10.16 (0.400)	23.50 (0.925)	44.07 (1.735)	16.38 (0.645)	19.86 (0.781)
100	45.72 (1.800)	11.43 (0.450)	24.39 (0.960)	55.25 (2.175)	16.69 (0.657)	20.75 (0.816)

ENTRY SIZE (TABLE - II)		
ENTRY SIZE	ØE ±0.25 (±0.010)	FOR SHELL SIZES
A	3.20 (0.125)	09 - 100
B	4.80 (0.188)	09 - 100
C	6.40 (0.251)	09 - 100
D	7.21 (0.283)	09 - 100
E	8.74 (0.344)	51 - 100
F	9.75 (0.383)	100

MATERIAL AND FINISH (TABLE III)		
CODE	MATERIAL	FINISH
W	ALUMINIUM ALLOY	CADMIUM OLIVE DRAB
N		ELECTROLESS NICKEL
Z		ZINC NICKEL BLACK
A		ANODIZE BLACK
Y		CADMIUM YELLOW CHROMITE
SEE PAGE NO 10 FOR FULL RANGE OF FINISH OPTIONS		

HARDWARE OPTION (TABLE - IV)		
CODE	DESCRIPTION	ITEMS IN KIT
J	JACKPOST	JACKPOST - 2 NOS TEETH WASHERS - 2 NOS LOCK NUT - 2 NOS
H	HEXAGONAL SOCKET HEADED - LOW PROFILE	HEX HEADED JACK SCREW - 2 NOS E-RETAINING RINGS - 2 NOS
S	SLOT HEADED JACKSCREW - LOW PROFILE	SLOT HEADED JACK SCREW - 2 NOS E-RETAINING RINGS - 2 NOS
EX	HEXAGONAL SOCKET HEADED - EXTENDED	HEXAGONAL SOCKET HEADED JACKSCREW - 2 NOS E-RETAINING RINGS - 2 NOS
E	SLOT HEADED JACKSCREW - EXTENDED	SLOT HEADED JACK SCREW - 2 NOS E-RETAINING RINGS - 2 NOS

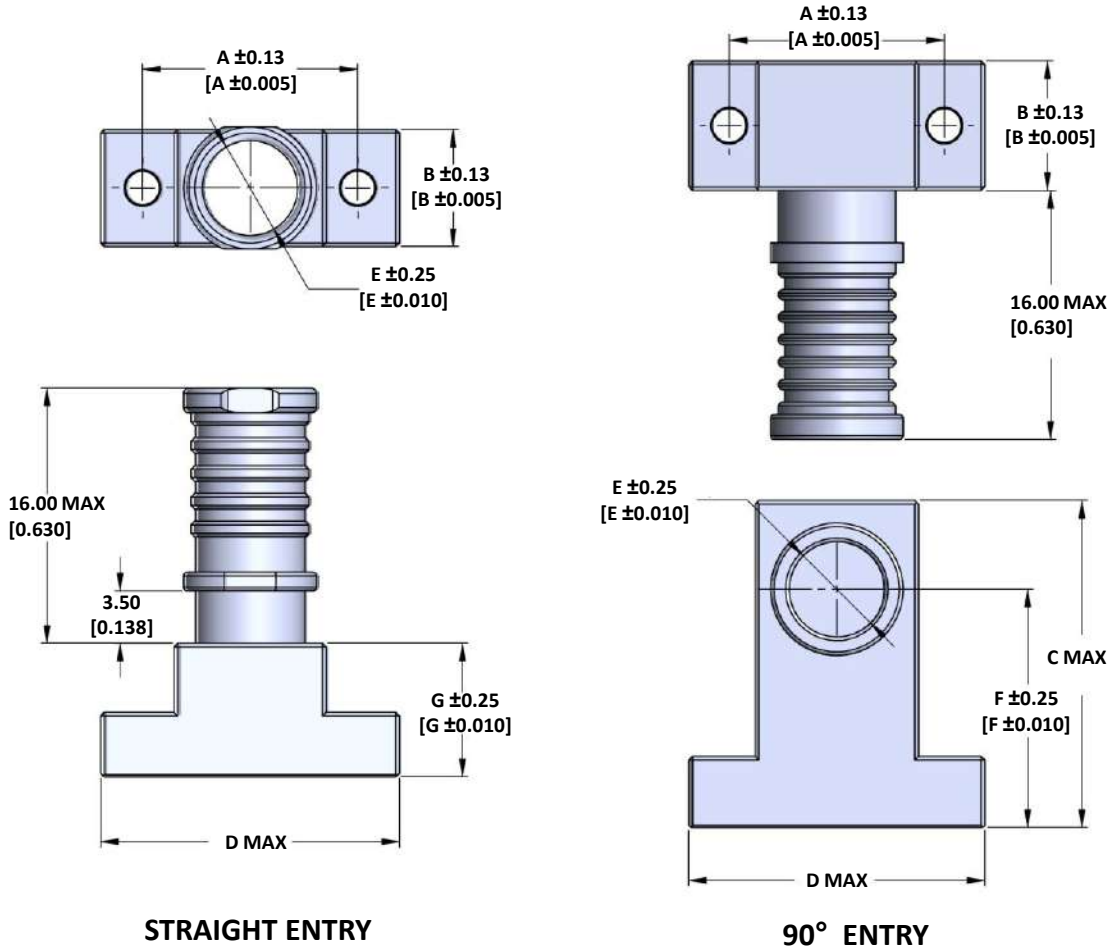
HARDWARE OPTION- S
(FOR REFERENCE ONLY)



- Dimensions in parenthesis are in inches.
- Custom Hardware options can be provided on request. For customization mail to us on sales@turboindia.co.in



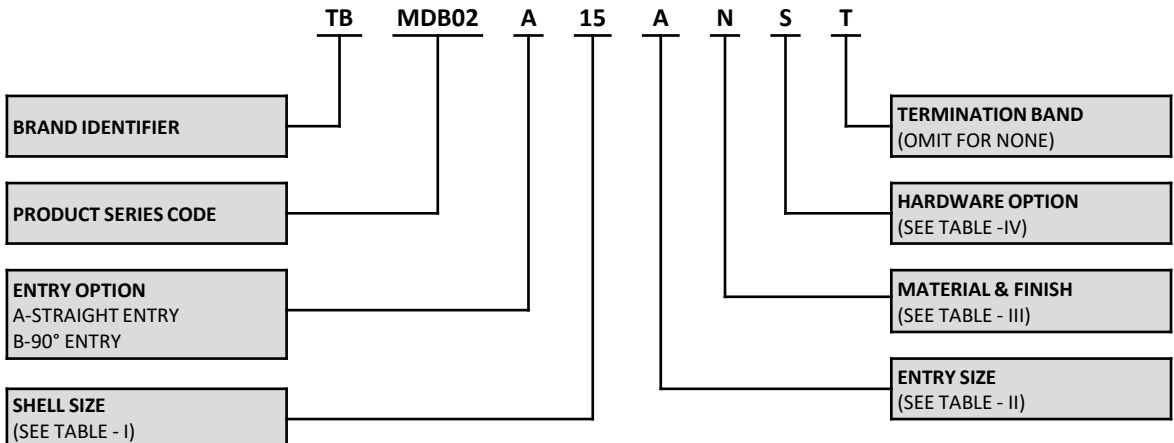
SERIES MDB02



STRAIGHT ENTRY

90° ENTRY

ORDERING INFORMATION



SERIES MDB02

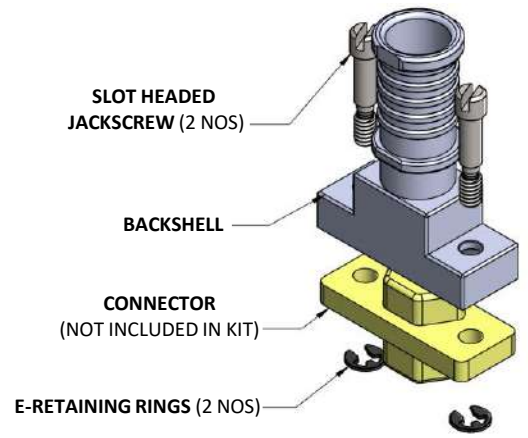
SHELL SIZE (TABLE - I)						
SHELL SIZE	A ± 0.13 (± 0.005)	B ± 0.13 (± 0.005)	C MAX	D MAX	F ± 0.25 (± 0.010)	G ± 0.25 (± 0.010)
9	14.35 (0.565)	8.64 (0.340)	21.97 (0.865)	19.94 (0.785)	15.88 (0.625)	11.04 (0.434)
15	18.16 (0.715)	8.64 (0.340)	21.97 (0.865)	23.75 (0.935)	15.88 (0.625)	12.49 (0.491)
21	21.97 (0.865)	8.64 (0.340)	21.97 (0.865)	27.56 (1.085)	15.88 (0.625)	13.76 (0.541)
25	24.51 (0.965)	8.64 (0.340)	21.97 (0.865)	30.10 (1.185)	15.88 (0.625)	15.03 (0.591)
31	28.32 (1.115)	8.64 (0.340)	21.97 (0.865)	33.91 (1.335)	15.88 (0.625)	16.05 (0.631)
37	32.13 (1.265)	8.64 (0.340)	21.97 (0.865)	37.72 (1.485)	15.88 (0.625)	17.07 (0.672)
51	30.86 (1.215)	10.16 (0.400)	21.97 (0.865)	36.45 (1.435)	15.88 (0.625)	19.19 (0.755)
69	34.48 (1.515)	10.16 (0.400)	23.50 (0.925)	44.07 (1.735)	16.38 (0.645)	19.86 (0.781)
100	45.72 (1.800)	11.43 (0.450)	24.39 (0.960)	55.25 (2.175)	16.69 (0.657)	20.75 (0.816)

ENTRY SIZE (TABLE - II)		
ENTRY SIZE	ØE ±0.25 (±0.010)	FOR SHELL SIZES
A	3.20 (0.125)	09 - 100
B	4.80 (0.188)	09 - 100
C	6.40 (0.251)	09 - 100
D	7.21 (0.283)	09 - 100
E	8.74 (0.344)	51 - 100
F	9.75 (0.383)	100

MATERIAL AND FINISH (TABLE III)		
CODE	MATERIAL	FINISH
W	ALUMINIUM ALLOY	CADMIUM OLIVE DRAB
N		ELECTROLESS NICKEL
Z		ZINC NICKEL BLACK
A		ANODIZE BLACK
Y		CADMIUM YELLOW CHROMITE
SEE PAGE NO 10 FOR FULL RANGE OF FINISH OPTIONS		

HARDWARE OPTION (TABLE - IV)		
CODE	DESCRIPTION	ITEMS IN KIT
J	JACKPOST	JACKPOST - 2 NOS TEETH WASHERS - 2 NOS LOCK NUT - 2 NOS
H	HEXAGONAL SOCKET HEADED - LOW PROFILE	HEX HEADED JACK SCREW - 2 NOS E-RETAINING RINGS - 2 NOS
S	SLOT HEADED JACKSCREW - LOW PROFILE	SLOT HEADED JACK SCREW - 2 NOS E-RETAINING RINGS - 2 NOS
EX	HEXAGONAL SOCKET HEADED - EXTENDED	HEXAGONAL SOCKET HEADED JACKSCREW - 2 NOS E-RETAINING RINGS - 2 NOS
E	SLOT HEADED JACKSCREW - EXTENDED	SLOT HEADED JACK SCREW - 2 NOS E-RETAINING RINGS - 2 NOS

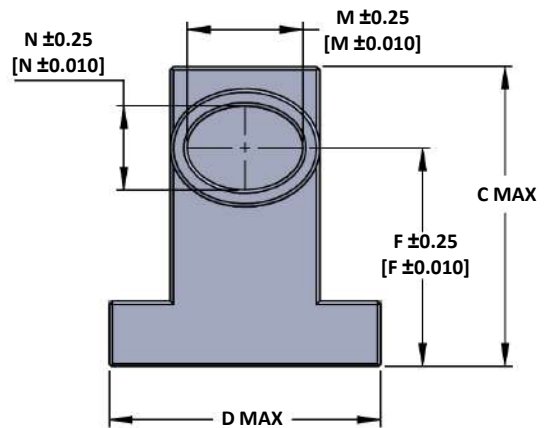
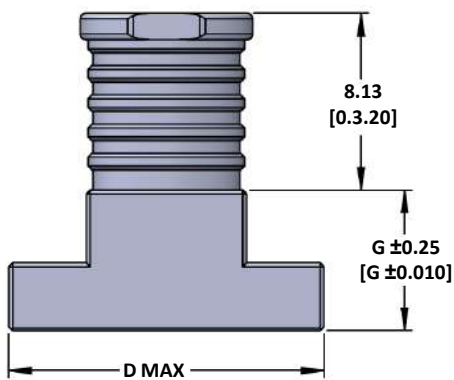
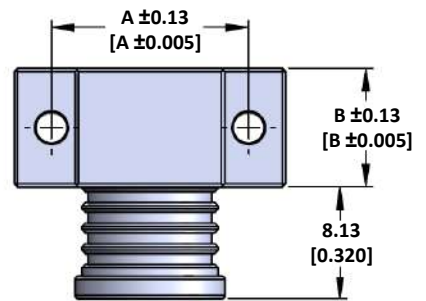
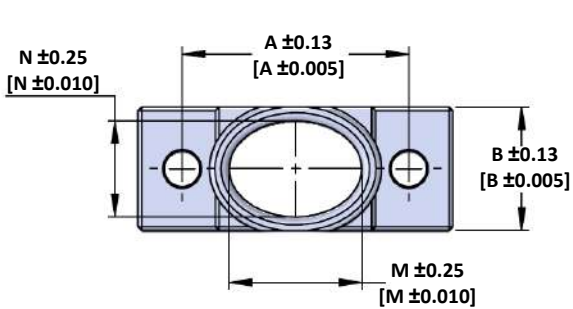
**HARDWARE OPTION- S
(FOR REFERENCE ONLY)**



- > Dimensions in parenthesis are in inches.
- > Custom Hardware options can be provided on request. For customization mail to us on sales@turboindia.co.in



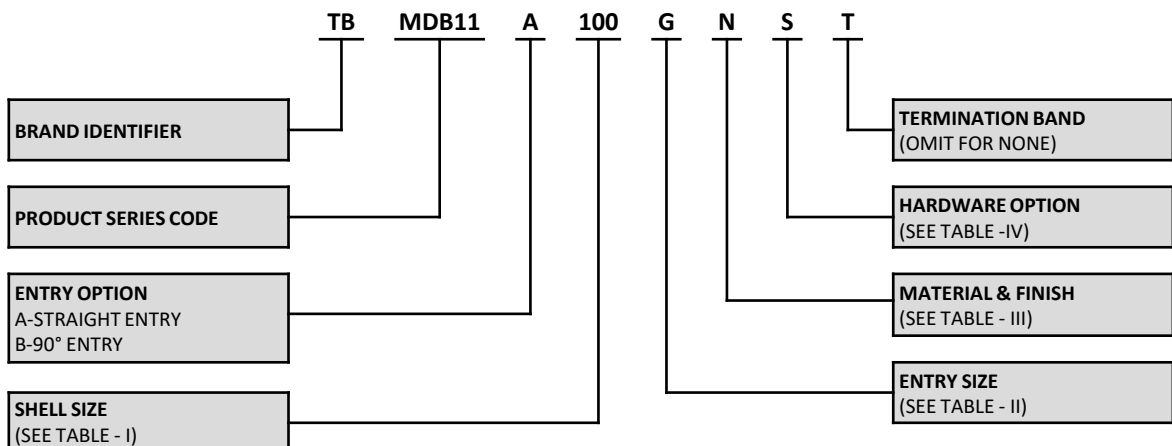
SERIES MDB11



STRAIGHT ENTRY

90° ENTRY

ORDERING INFORMATION



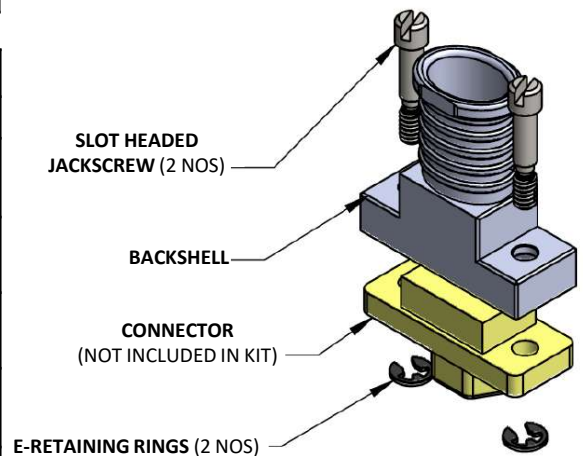
SERIES MDB11

SHELL SIZE (TABLE- I)						
SHELL SIZE	A ± 0.13 (±0.005)	B ±0.13 (± 0.005)	C MAX	D MAX	F ± 0.25 (± 0.010)	G ± 0.25 (±0.010)
9	14.35 (0.565)	8.64 (0.340)	21.97 (0.865)	19.94 (0.785)	15.88 (0.625)	11.22 (0.440)
15	18.16 (0.715)	8.64 (0.340)	21.97 (0.865)	23.75 (0.935)	15.88 (0.625)	12.49 (0.491)
21	21.97 (0.865)	8.64 (0.340)	21.97 (0.865)	27.56 (1.085)	15.88 (0.625)	13.76 (0.541)
25	24.51 (0.965)	8.64 (0.340)	21.97 (0.865)	30.10 (1.185)	15.88 (0.625)	15.03 (0.591)
31	28.32 (1.115)	8.64 (0.340)	21.97 (0.865)	33.91 (1.335)	15.88 (0.625)	16.05 (0.631)
37	32.13 (1.265)	8.64 (0.340)	21.97 (0.865)	37.72 (1.485)	15.88 (0.625)	17.07 (0.672)
51	30.86 (1.215)	10.16 (0.400)	21.97 (0.865)	36.45 (1.435)	15.88 (0.625)	19.19 (0.755)
69	34.48 (1.515)	10.16 (0.400)	23.50 (0.925)	44.07 (1.735)	16.38 (0.645)	19.86 (0.781)
100	45.72 (1.800)	11.43 (0.450)	24.39 (0.960)	55.25 (2.175)	16.69 (0.657)	20.75 (0.816)

ENTRY SIZE (TABLE - II)			
ENTRY SIZE	N ± 0.25 (± 0.010)	M ± 0.25 (± 0.010)	FOR SHELL SIZES
A	7.21 (0.284)	8.74 (0.344)	09 - 100
B	7.21 (0.284)	12.55 (0.494)	15 - 100
C	7.21 (0.284)	16.36 (0.644)	21 - 100
D	7.21 (0.284)	18.90 (0.744)	25 - 100
E	7.21 (0.284)	22.71 (0.894)	31 - 100
F	7.21 (0.284)	25.25 (0.994)	37 - 100
G	7.21 (0.284)	26.42 (1.040)	37,69 - 100
H	8.13 (0.320)	37.75 (1.250)	69 - 100
K	9.75 (0.384)	38.61 (1.520)	100

MATERIAL AND FINISH (TABLE III)		
CODE	MATERIAL	FINISH
W	ALUMINIUM ALLOY	CADMIUM OLIVE DRAB
N		ELECTROLESS NICKEL
Z		ZINC NICKEL BLACK
A		ANODIZE BLACK
Y		CADMIUM YELLOW CHROMITE
SEE PAGE NO 10 FOR FULL RANGE OF FINISH OPTIONS		

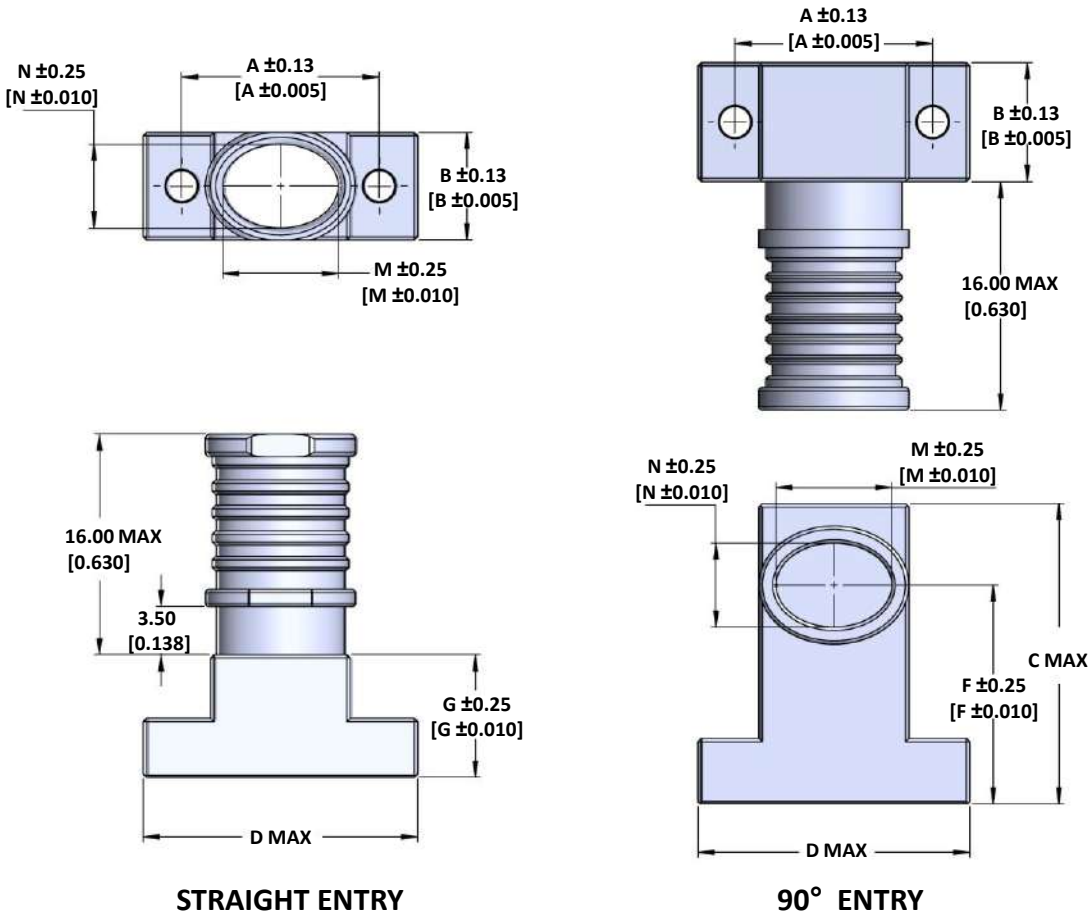
**HARDWARE OPTION- S
(FOR REFERENCE ONLY)**



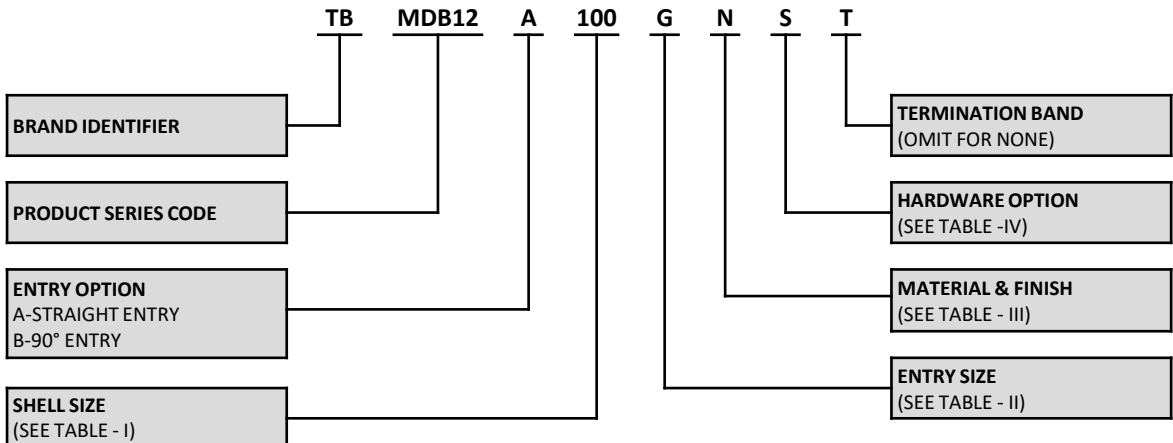
HARDWARE OPTION (TABLE - IV)		
CODE	DESCRIPTION	ITEMS IN KIT
J	JACKPOST	JACKPOST - 2 NOS TEETH WASHERS - 2 NOS LOCK NUT - 2 NOS
H	HEXAGONAL SOCKET HEADED - LOW PROFILE	HEX HEADED JACK SCREW - 2 NOS E-RETAINING RINGS- 2 NOS
S	SLOT HEADED JACKSCREW - LOW PROFILE	SLOT HEADED JACK SCREW - 2 NOS E-RETAINING RINGS- 2 NOS
EX	HEXAGONAL SOCKET HEADED - EXTENDED	HEXAGONAL SOCKET HEADED JACKSCREW - 2 NOS E-RETAINING RINGS - 2 NOS
E	SLOT HEADED JACKSCREW - EXTENDED	SLOT HEADED JACK SCREW - 2 NOS E-RETAINING RINGS - 2 NOS

- Dimensions in parenthesis are in inches.
- Custom Hardware options can be provided on request. For customization mail to us on sales@turboindia.co.in

SERIES MDB12



ORDERING INFORMATION



SERIES MDB12

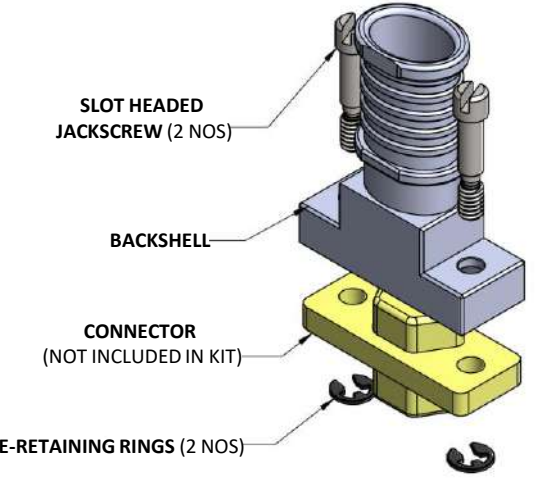
SHELL SIZE (TABLE- I)						
SHELL SIZE	A ± 0.13 (±0.005)	B ±0.13 (± 0.005)	C MAX	D MAX	F ± 0.25 (± 0.010)	G ± 0.25 (±0.010)
9	14.35 (0.565)	8.64 (0.340)	21.97 (0.865)	19.94 (0.785)	15.88 (0.625)	11.22 (0.440)
15	18.16 (0.715)	8.64 (0.340)	21.97 (0.865)	23.75 (0.935)	15.88 (0.625)	12.49 (0.491)
21	21.97 (0.865)	8.64 (0.340)	21.97 (0.865)	27.56 (1.085)	15.88 (0.625)	13.76 (0.541)
25	24.51 (0.965)	8.64 (0.340)	21.97 (0.865)	30.10 (1.185)	15.88 (0.625)	15.03 (0.591)
31	28.32 (1.115)	8.64 (0.340)	21.97 (0.865)	33.91 (1.335)	15.88 (0.625)	16.05 (0.631)
37	32.13 (1.265)	8.64 (0.340)	21.97 (0.865)	37.72 (1.485)	15.88 (0.625)	17.07 (0.672)
51	30.86 (1.215)	10.16 (0.400)	21.97 (0.865)	36.45 (1.435)	15.88 (0.625)	19.19 (0.755)
69	34.48 (1.515)	10.16 (0.400)	23.50 (0.925)	44.07 (1.735)	16.38 (0.645)	19.86 (0.781)
100	45.72 (1.800)	11.43 (0.450)	24.39 (0.960)	55.25 (2.175)	16.69 (0.657)	20.75 (0.816)

ENTRY SIZE (TABLE - II)			
ENTRY SIZE	N ± 0.25 (± 0.010)	M ± 0.25 (± 0.010)	FOR SHELL SIZES
A	7.21 (0.284)	8.74 (0.344)	09 - 100
B	7.21 (0.284)	12.55 (0.494)	15 - 100
C	7.21 (0.284)	16.36 (0.644)	21 - 100
D	7.21 (0.284)	18.90 (0.744)	25 - 100
E	7.21 (0.284)	22.71 (0.894)	31 - 100
F	7.21 (0.284)	25.25 (0.994)	37 - 100
G	7.21 (0.284)	26.42 (1.040)	37,69 - 100
H	8.13 (0.320)	37.75 (1.250)	69 - 100
K	9.75 (0.384)	38.61 (1.520)	100

MATERIAL AND FINISH (TABLE III)		
CODE	MATERIAL	FINISH
W	ALUMINIUM ALLOY	CADMIUM OLIVE DRAB
N		ELECTROLESS NICKEL
Z		ZINC NICKEL BLACK
A		ANODIZE BLACK
Y		CADMIUM YELLOW CHROMITE
SEE PAGE NO 10 FOR FULL RANGE OF FINISH OPTIONS		

**HARDWARE OPTION- S
(FOR REFERENCE ONLY)**

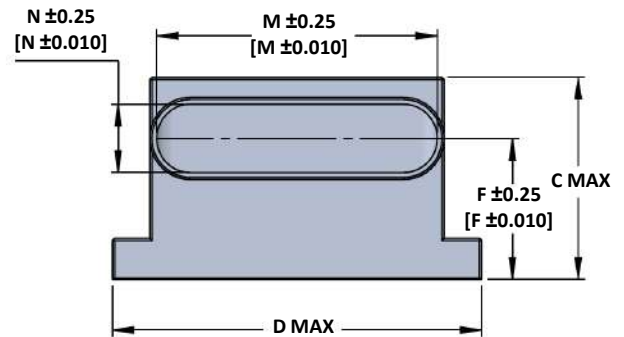
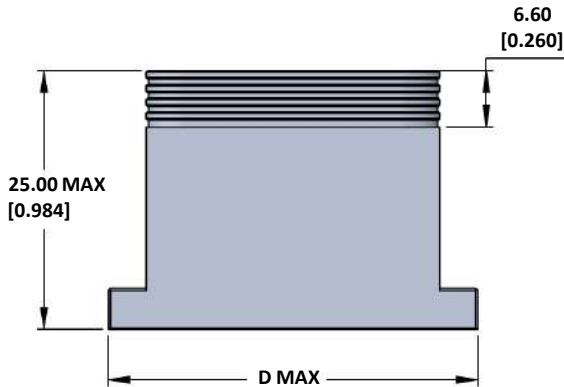
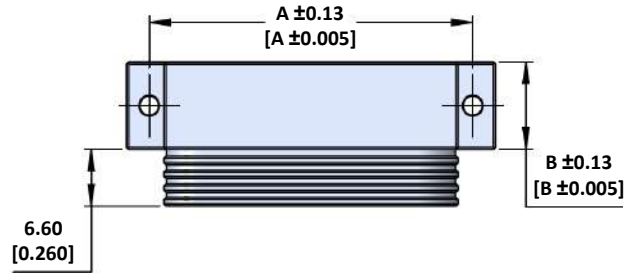
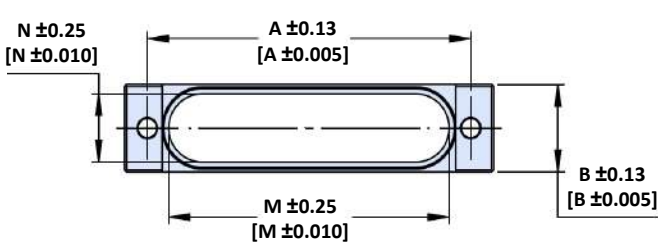
HARDWARE OPTION (TABLE - IV)		
CODE	DESCRIPTION	ITEMS IN KIT
J	JACKPOST	JACKPOST - 2 NOS TEETH WASHERS - 2 NOS LOCK NUT - 2 NOS
H	HEXAGONAL SOCKET HEADED - LOW PROFILE	HEX HEADED JACK SCREW - 2 NOS E-RETAINING RINGS- 2 NOS
S	SLOT HEADED JACKSCREW - LOW PROFILE	SLOT HEADED JACK SCREW - 2 NOS E-RETAINING RINGS- 2 NOS
EX	HEXAGONAL SOCKET HEADED - EXTENDED	HEXAGONAL SOCKET HEADED JACKSCREW - 2 NOS E-RETAINING RINGS - 2 NOS
E	SLOT HEADED JACKSCREW - EXTENDED	SLOT HEADED JACK SCREW - 2 NOS E-RETAINING RINGS - 2 NOS



- Dimensions in parenthesis are in inches.
- Custom Hardware options can be provided on request. For customization mail to us on sales@turboindia.co.in



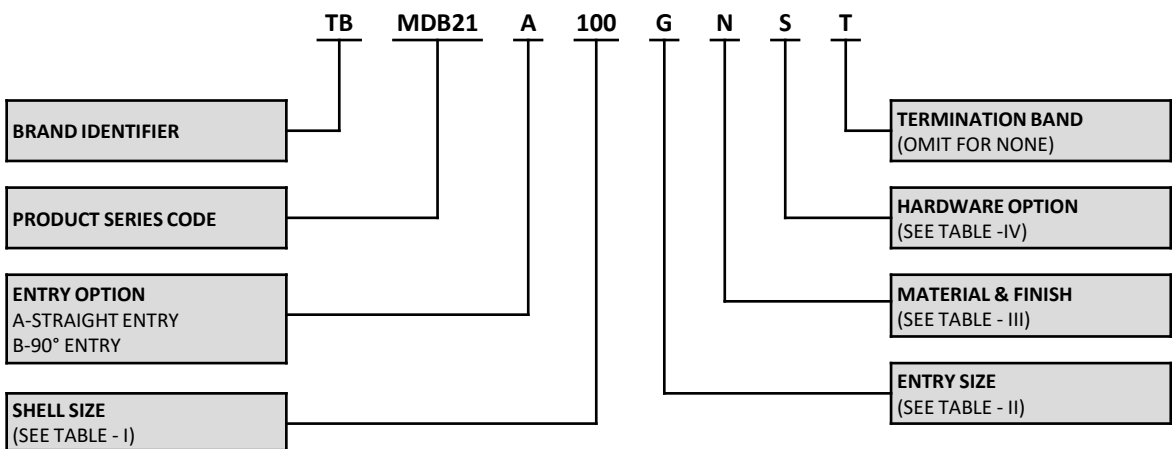
SERIES MDB21



STRAIGHT ENTRY

90° ENTRY

ORDERING INFORMATION



SERIES MDB21

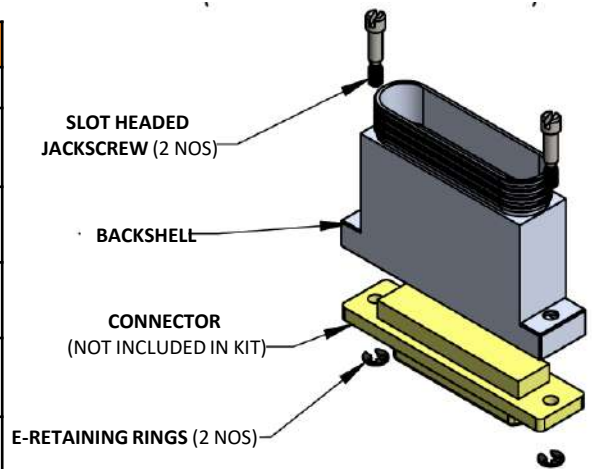
SHELL SIZE (TABLE - I)					
SHELL SIZE	A ± 0.13 (± 005)	B ± 0.13 (± 005)	C MAX	D MAX	F ± 0.25 (± 010)
9	14.35 (0.565)	8.64 (0.340)	21.97 (0.865)	19.94 (0.785)	15.88 (0.625)
15	18.16 (0.715)	8.64 (0.340)	21.97 (0.865)	23.75 (0.935)	15.88 (0.625)
21	21.97 (0.865)	8.64 (0.340)	21.97 (0.865)	27.56 (1.085)	15.88 (0.625)
25	24.51 (0.965)	9.15 (0.360)	21.97 (0.865)	30.10 (1.185)	15.88 (0.625)
31	28.32 (1.115)	9.15 (0.360)	21.97 (0.865)	33.91 (1.335)	15.88 (0.625)
37	32.13 (1.265)	9.15 (0.360)	21.97 (0.865)	37.72 (1.485)	15.88 (0.625)
51	30.86 (1.215)	10.16 (0.400)	21.97 (0.865)	36.45 (1.435)	15.88 (0.625)
69	38.62 (1.520)	10.16 (0.400)	23.50 (0.925)	44.07 (1.735)	16.38 (0.645)
100	45.72 (1.800)	11.43 (0.450)	24.39 (0.960)	55.25 (2.175)	16.69 (0.657)

ENTRY SIZE (TABLE - II)			
ENTRY SIZE	N ± 0.25 (± 0.010)	M ± 0.25 (± 0.010)	FOR SHELL SIZES
A	7.00 (0.276)	9.55 (0.376)	09 - 100
B	7.00 (0.276)	13.35 (0.525)	15 - 100
C	7.00 (0.276)	17.15 (0.675)	21 - 100
D	7.00 (0.276)	19.70 (0.755)	25 - 100
E	7.00 (0.276)	23.50 (0.925)	31 - 100
F	7.00 (0.276)	27.31 (1.075)	37 - 100
G	7.00 (0.276)	36.20 (1.425)	51,69-100
H	8.13 (0.320)	26.05 (1.0.25)	51,69 - 100
K	8.13 (0.320)	33.65 (1.324)	69 - 100
L	9.25 (0.364)	37.60 (1.480)	100

MATERIAL AND FINISH (TABLE III)		
CODE	MATERIAL	FINISH
W	ALUMINIUM ALLOY	CADMIUM OLIVE DRAB
N		ELECTROLESS NICKEL
Z		ZINC NICKEL BLACK
A		ANODIZE BLACK
Y		CADMIUM YELLOW CHROMITE
SEE PAGE NO 10 FOR FULL RANGE OF FINISH OPTIONS		

**HARDWARE OPTION- S
(FOR REFERENCE ONLY)**

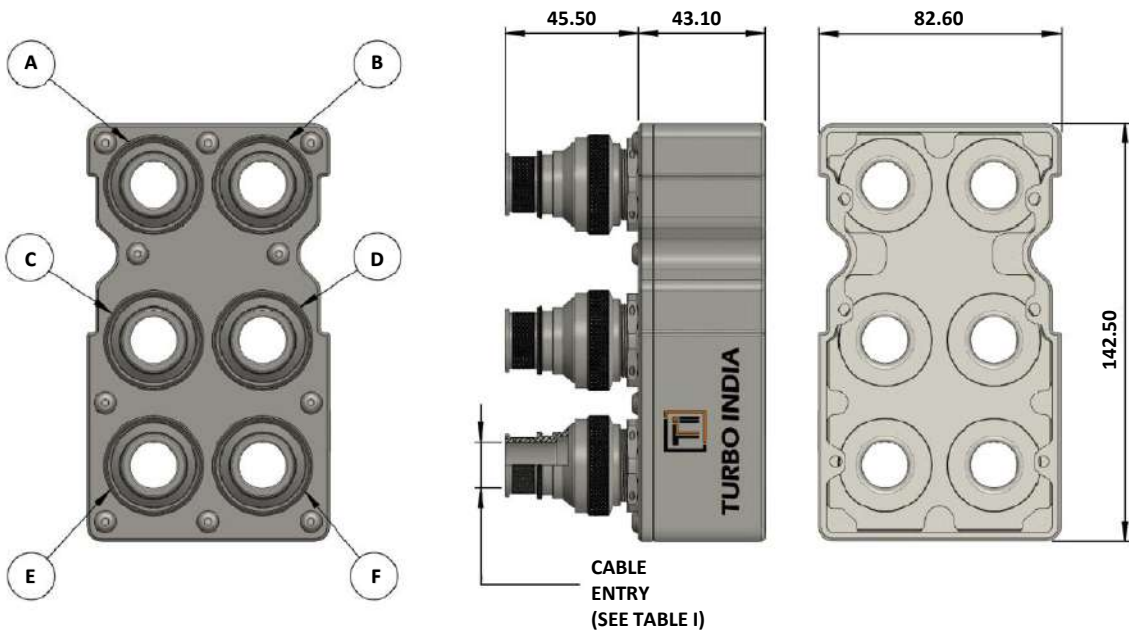
HARDWARE OPTION (TABLE - IV)		
CODE	DESCRIPTION	ITEMS IN KIT
J	JACKPOST	JACKPOST - 2 NOS TEETH WASHERS - 2 NOS LOCK NUT - 2 NOS
H	HEXAGONAL SOCKET HEADED - LOW PROFILE	HEX HEADED JACK SCREW - 2 NOS E-RETAINING RINGS- 2 NOS
S	SLOT HEADED JACKSCREW - LOW PROFILE	SLOT HEADED JACK SCREW - 2 NOS E-RETAINING RINGS- 2 NOS
EX	HEXAGONAL SOCKET HEADED - EXTENDED	HEXAGONAL SOCKET HEADED JACKSCREW - 2 NOS E-RETAINING RINGS - 2 NOS
E	SLOT HEADED JACKSCREW - EXTENDED	SLOT HEADED JACK SCREW - 2 NOS E-RETAINING RINGS - 2 NOS



- Dimensions in parenthesis are in inches.
- Custom Hardware options can be provided on request. For customization mail to us on sales@turboindia.co.in

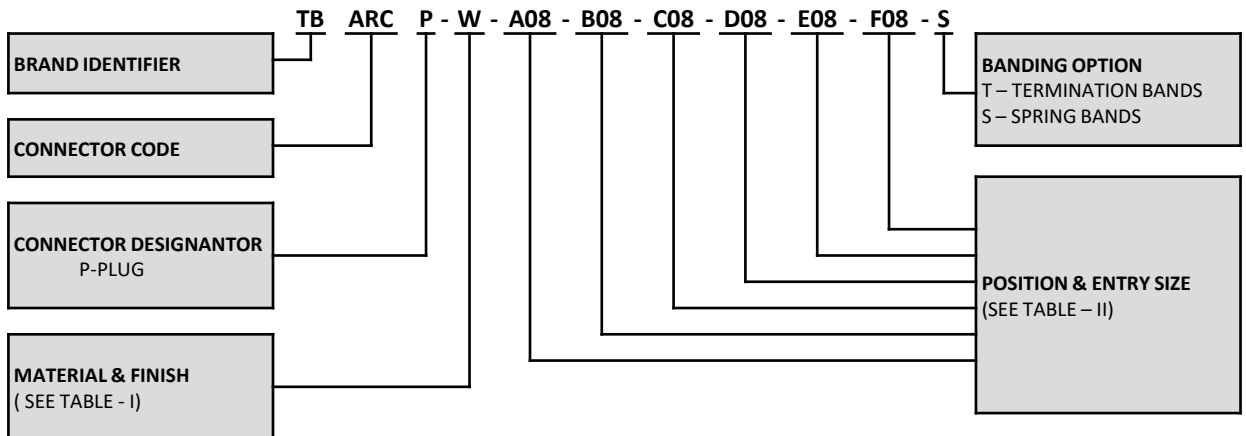


SERIES ARC-P-X



ASSEMBLY USED ON : PLUG - SHELL SIZE 3

ORDERING INFORMATION



SERIES ARC-P-X

TABLE I (MATERIAL & FINISH)		
FINISH CODE	BASE MATERIAL	FINISH
U	ALUMINIUM	UNPLATED
W	ALUMINIUM	CADIUM OLIVE DRAB
N	ALUMINIUM	ELECTROLESS NICKEL
VO	ALUMINIUM	ZINC COBALT - OLIVE DRAB
Z	ALUMINIUM	ZINC NICKEL - BLACK
SEE PAGE NO 10 FOR FULL RANGE OF FINISH OPTIONS		

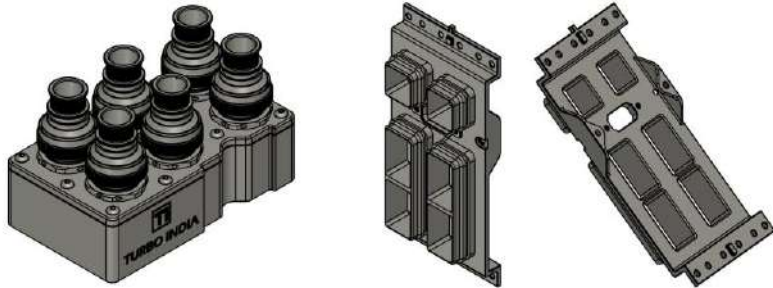
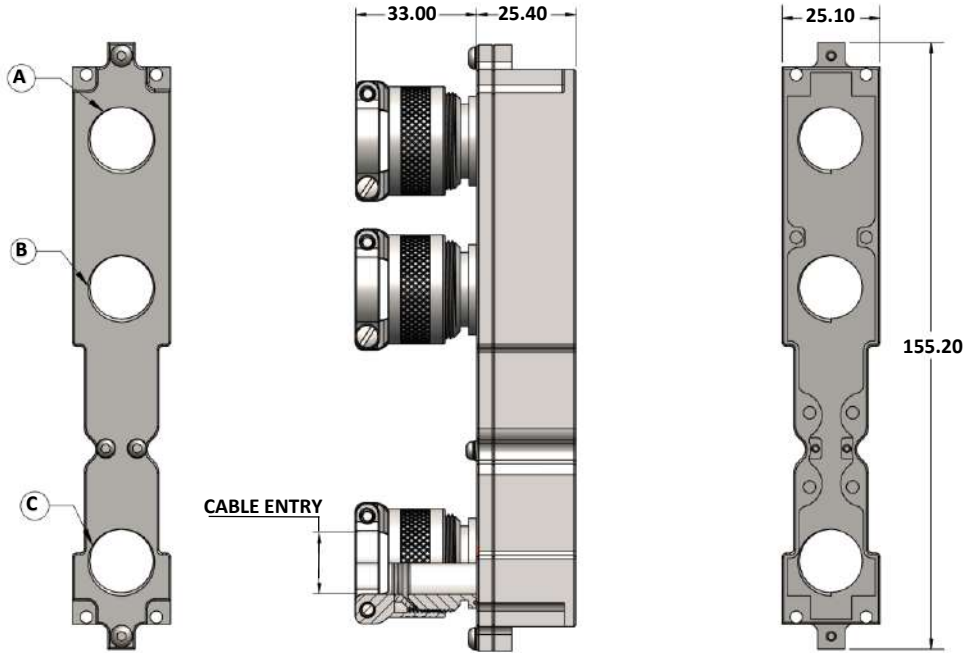


TABLE II (CABLE ENTRY)	
ENTRY SIZE	ENTRY DIA
08	12.70
10	16.00
12	19.10
14	22.40
16	25.40
18	28.70

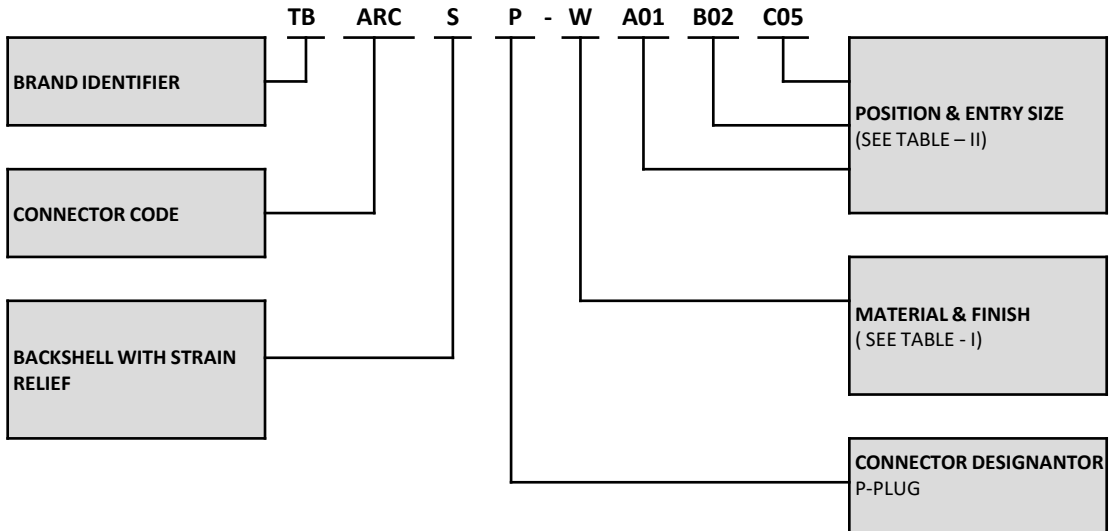
- Due to nonstandard modifications by the connector manufacturers, connector samples have to be provided to ensure the mateability.
- For any kind of customization, reach out to us on sales@turboindia.co.in



SERIES ARCS-P



ORDERING INFORMATION



SERIES ARCS-P

TABLE I (MATERIAL & FINISH)		
FINISH CODE	BASE MATERIAL	FINISH
U	ALUMINIUM	UNPLATED
W	ALUMINIUM	CADIUM OLIVE DRAB
N	ALUMINIUM	ELECTROLESS NICKEL
VO	ALUMINIUM	ZINC COBALT - OLIVE DRAB
Z	ALUMINIUM	ZINC NICKEL - BLACK
SEE PAGE NO 10 FOR FULL RANGE OF FINISH OPTIONS		



TABLE II (CABLE ENTRY)		
ENTRY NO	CABLE ENTRY	
	MIN	MAX
00	N/A	N/A
01	1.60	3.20
02	3.20	6.40
03	6.40	9.50
04	9.50	12.70
05	12.70	15.90
CLAMP NOT SUPPLIED WITH ENTRY NUMBER 00.		

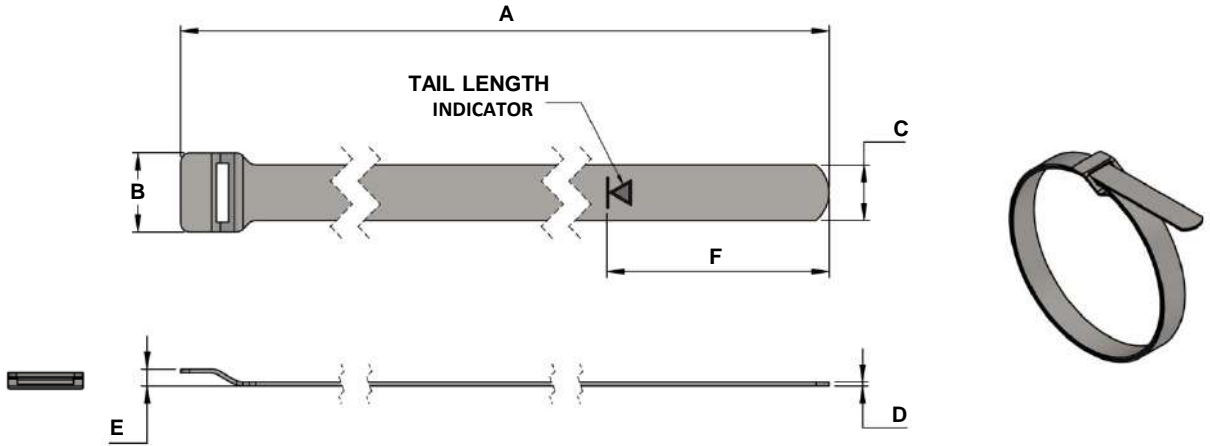
- Due to nonstandard modifications by the connector manufacturers, connector samples have to be provided to ensure the mateability.
- For any kind of customization, reach out to us on sales@turboindia.co.in

TERMINATION ACCESSORIES

Termination accessories are nothing but, elements which we used for terminating EMI/RFI braids to backshell. You can choose your termination accessory for your backshell from this catalogue and integrate in respective product part numbering code to avail the elements in your backshell kit.

SERIES 128

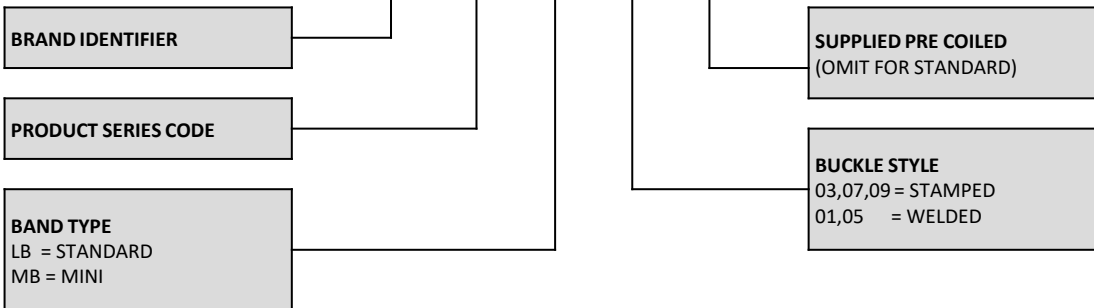
STAMPED BUCKLE OPTION



PART NUMBER	A ± 1.52mm (0.060")	B ± 0.79mm (0.031")	C ± 0.26mm (0.010")	D REF	E REF	F REF
TB-128LB-03	361.95 (14.25)	8.89 (0.350)	6.35 (0.250)	0.51 (0.020)	3.30 (0.130)	51.59 (2.031)
TB-128LB-03-01	361.95 (14.25)	8.89 (0.350)	6.35 (0.250)	0.51 (0.020)	3.30 (0.130)	51.59 (2.031)
TB-128MB-07	206.38 (8.125)	4.95 (0.195)	3.05 (0.120)	0.38 (0.015)	1.35 (0.053)	51.59 (2.031)
TB-128MB-07-01	206.38 (8.125)	4.95 (0.195)	3.05 (0.120)	0.38 (0.015)	1.35 (0.053)	51.59 (2.031)
TB-128MB-09	361.95 (14.25)	4.95 (0.195)	3.05 (0.120)	0.38 (0.015)	1.35 (0.053)	51.59 (2.031)
TB-128MB-09-01	361.95 (14.25)	4.95 (0.195)	3.05 (0.120)	0.38 (0.015)	1.35 (0.053)	51.59 (2.031)

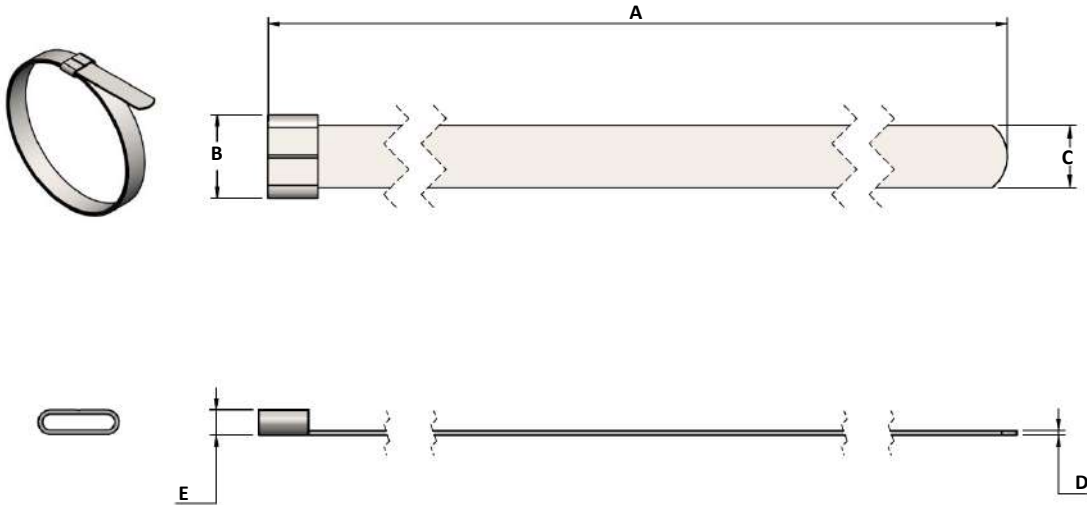
ORDERING INFORMATION

TB - 128 LB - 03 - 01



SERIES 128

WELDED BUCKLE OPTION



PART NUMBER	A ± 1.52mm (0.060")	B ± 0.79mm (0.031")	C ± 0.26mm (0.010")	D REF	E REF
TB-128LB-01	355.60 (14.00)	8.33 (0.328)	6.22 (0.245)	0.50 (0.019)	2.54 (0.100)
TB-128LB-01-01	355.60 (14.00)	8.33 (0.328)	6.22 (0.245)	0.50 (0.019)	2.54 (0.100)
TB-128MB-05	241.30 (9.50)	5.03 (0.198)	2.99 (0.118)	0.40 (0.015)	2.03 (0.080)
TB-128MB-05-01	241.30 (9.50)	5.03 (0.198)	2.99 (0.118)	0.40 (0.015)	2.03 (0.080)

POPULAR CROSS REFERENCE WITH TURBO

DESCRIPTION	TURBO INDIA	M85049/128	GLENAIR
STAMPED BUCKLE STANDARD BAND STRAIGHT	TB-128LB-03	-3	600-052
STAMPED BUCKLE STANDARD BAND PRE COILED	TB-128LB-03-01	-4	600-052-1
STAMPED BUCKLE MINI BAND STRAIGHT	TB-128MB-07	-7	600-057
STAMPED BUCKLE MINI BAND PRE COILED	TB-128MB-07-01	-8	600-057-1
STAMPED BUCKLE MINI BAND EXTENDED STRAIGHT	TB-128MB-09	-	600-083
STAMPED BUCKLE MINI BAND EXTENDED & PRE COILED	TB-128MB-09-01	-	600-083-1
WELDED BUCKLE STANDARD BAND STRAIGHT	TB-128LB-01	-1	-
WELDED BUCKLE STANDARD BAND PRE COILED	TB-128LB-01-01	-2	-
WELDED BUCKLE MINI BAND STRAIGHT	TB-128MB-05	-5	-
WELDED BUCKLE MINI BAND PRE COILED	TB-128MB-05-01	-6	-

- Dimensions specified in parenthesis are in inches
- Optional brand marking available – contact sales@turboindia.co.in for details.
- Material : 300 series stainless steel passivated.

OUR FACILITIES

MARKETING & SALES



ENGINEERING & NPD



MACHINE SHOP



PLATING SHOP



ASSEMBLY



QUALITY



STORES





Turbo India Interconnect Solutions(TICS), built on the foundations of a 25 plus year interconnect components manufacturing legacy of Turbo India, is where you can find a complete solution for your interconnect needs. We strive for “CUSTOMER DELIGHT” through strict adherence to Customer and Product requirements and by maintaining an open-door for customizations.

For enquiries, the customer may either propose a suitable part number, based on the ordering information provided, or the TI Sales & Engineering Teams can assist in choosing the best possible configuration, based on applications, from the standard solutions available or propose a custom solution with part numbers and lead times, at the earliest.

For supply of standard solutions referred to in this catalog, an order may be placed after generating the required part numbers from the ordering information page.

For any orders or enquiries you may mail us on sales@turboindia.co.in






Supporting the
Global Military and Aerospace Industry

Scan to Reach
Website



 No. 114, PC Industrial Estate, Bangalore-560079, Karnataka, India.

 +91 80234 83447  sales@turboindia.co.in  turboindia.co.in